



Instruction Manual DW Electro Polished Accessories Manual 8.5



Read and understand this manual prior to operating or servicing this product.



Indhold / Contents:

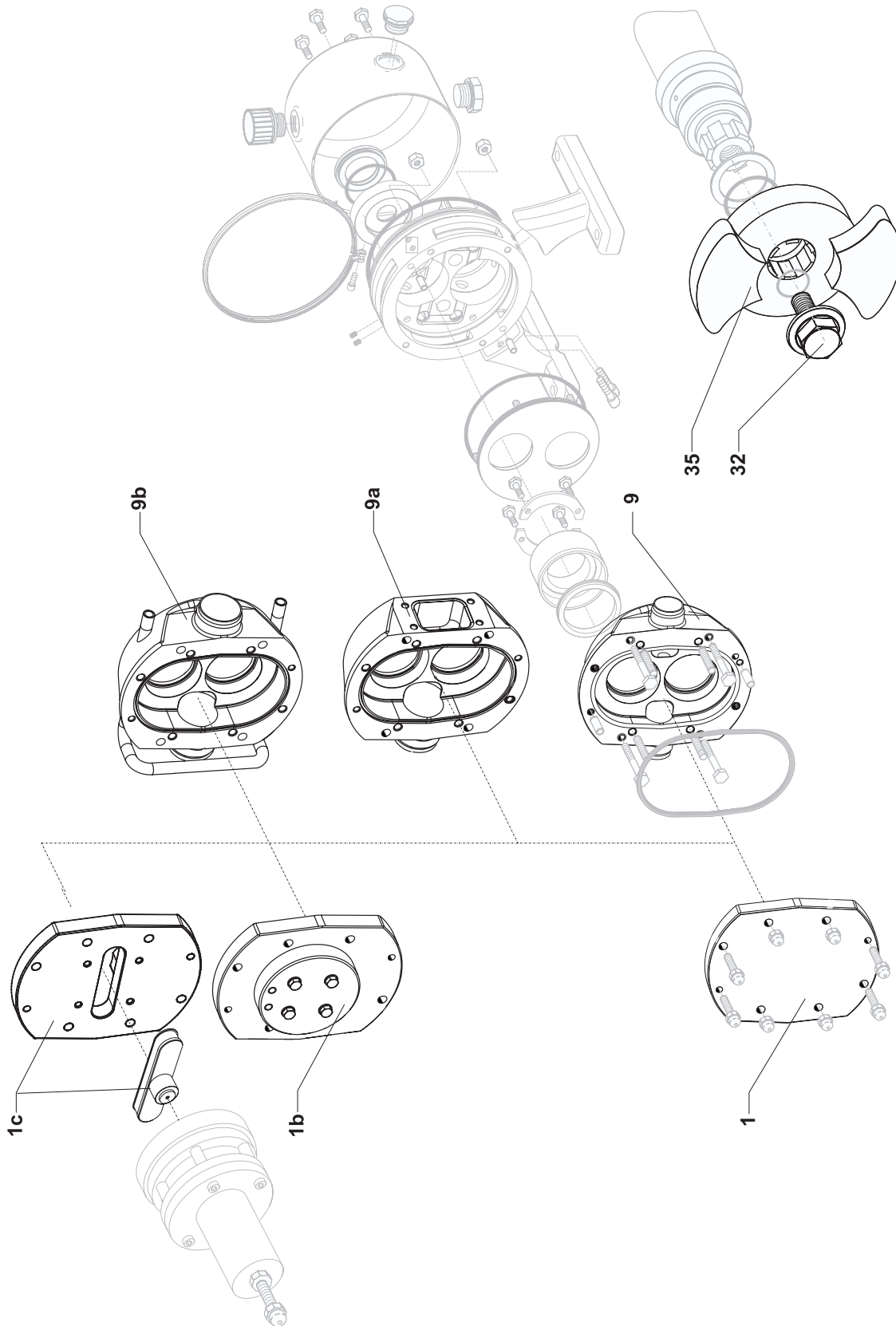
Dette er en tillægsmanual, der kun er gældende i forbindelse med el-poleret pumper. DW pumpen el-poleret må kun tages i brug og/eller serviceres hvis man er i besiddelse af den komplette hovedmanual for DW

Afsnit	Side	Beskrivelse
8.5.1	2	Pumpe komplet - El poleret

This is an appendix manual and applies only with electro polished pump. The DW pump electro polished must be put into operation or serviced only if one has the complete DW manual available.

Section	Page	Description
8.5.1	2	Pump complete - Electro polished

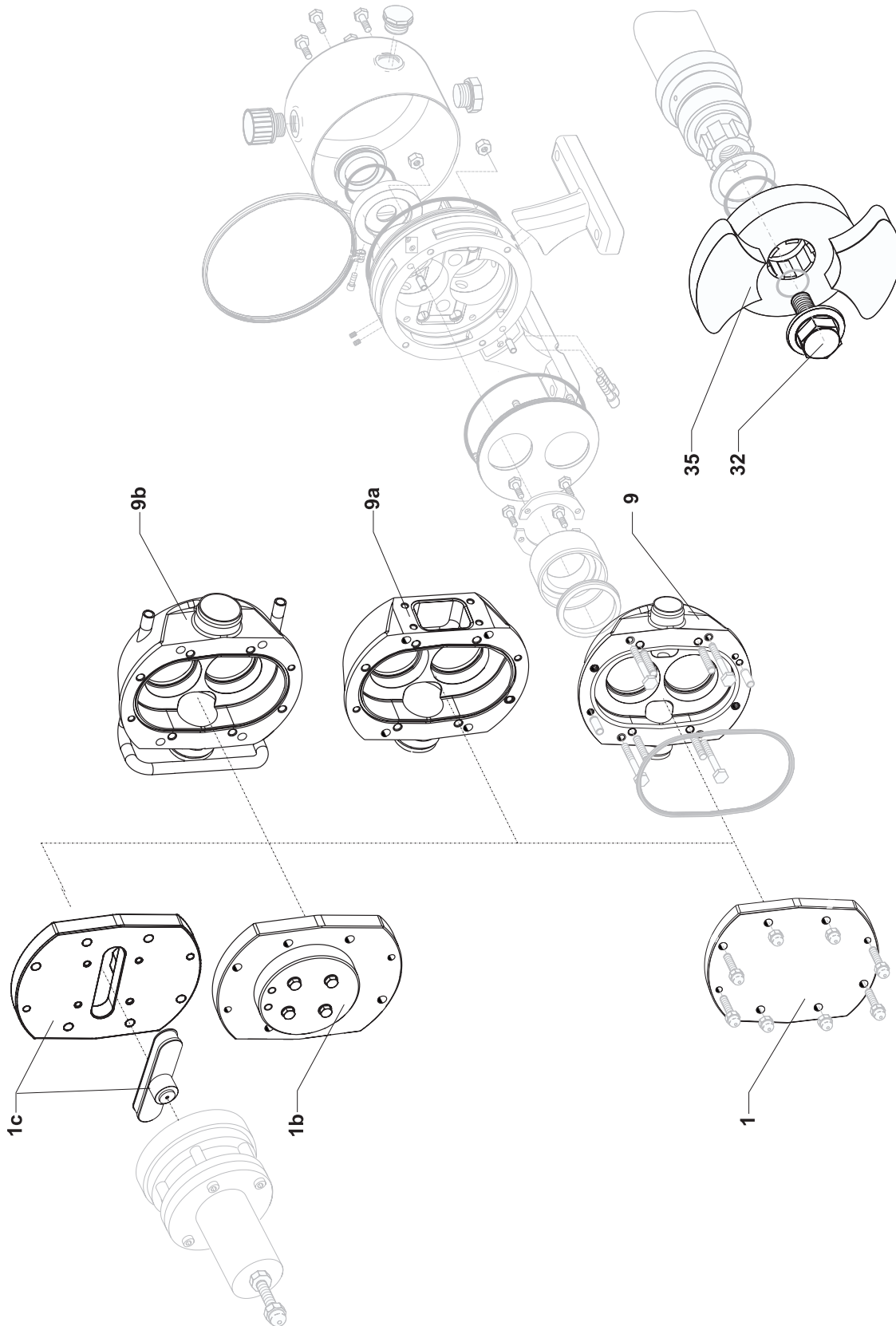
8.5.1 Pumpe komplet - El poleret / Pump complete - Electro polished DW



8.5.1 Pumpe komplet - El poleret / Pump complete - Electro polished DW1-3

Pos	Stk/Qty	Material	Benævneelse	Description	Lobe			Lobe
					Piston	Del nr. / Part No.	Del nr. / Part No.	
					DW1/0037.5	DW1/004/15	DW1/007/7	DW1/007/15_600
					Del nr. / Part No.			
1	1	316L	Frontdæksel standard	Front cover standard	LA1110101EL	LA1110100EL	LA1110100EL	LA1110100EL
1b	1	316L	Frontdæksel køle-/varmekappe	Front cover thermal jacket	LA1101110EL	LA1101111EL	LA1101111EL	LA1101111EL
1c	1	316L	Frontdæksel overtryksventil	Front cover relief Valve	LA1115101EL	LA1115100EL	LA1115100EL	LA1115100EL
-	1	316L	Ventil stempel	Valve piston	LA1106101EL	LA1106100EL	LA1106100EL	LA1106100EL
9	1	304S.S	Rotorhus for standard	Rotor case for standard	LA17991003EL	LA17991003EL	LA17991007EL	LA17991007EL
9a	1	304S.S	Rotorhus for rektangulært indløb	Rotor case for rectangular inlet	LAR17021003EL	LAR17021003EL	LAR17021006EL	LAR17021006EL
9b	1	304S.S	Rotorhus for køle-/varmekappe	Rotor case for thermal jacket	LA17141003EL	LA17141003EL	LA17141007EL	LA17141007EL
32	1	329S.S	Rotorskruer incl. friktionsring	Rotor screw with washer	LA10501003EL	LA10501004EL	LA10501006EL	LA10501006EL
35	1	316L	Rotor-høj virkningsgrad 110°	Rotor-high efficiency 110°	LA141003P2SHEL	LA14100421SHEL	LA14100721SHEL	LA14100721SHEL
-	1	316L	Rotor-Multi-Duty 110°	Rotor-Multi-Duty 110°	LA141003P3SHEL	LA14100423SHEL	LA14100723SHEL	LA14100723SHEL
-	1	316L	Rotor-høj temperatur 180°	Rotor-high temperature 180°	LA14100421SYEL	LA14100421SYEL	LA14100721SYEL	LA14100721SYEL
					DW2/006/10	DW2/007/20	DW2/013/10	DW2/013/15_600
					Del nr. / Part No.			
1	1	316L	Frontdæksel standard	Front cover standard	LA1110201EL	LA1110200EL	LA1110200EL	LA1110200EL
1b	1	316L	Frontdæksel køle-/varmekappe	Front cover thermal jacket	LA1101210EL	LA1101211EL	LA1101211EL	LA1101211EL
1c	1	316L	Frontdæksel overtryksventil	Front cover relief Valve	LA1115201EL	LA1115200EL	LA1115200EL	LA1115200EL
-	1	316L	Ventil stempel	Valve piston	LA1106201EL	LA1106200EL	LA1106200EL	LA1106200EL
9	1	304S.S	Rotorhus for standard	Rotor case for standard	LA17992006EL	LA17992006EL	LA17992013EL	LA17992013EL
9a	1	304S.S	Rotorhus for rektangulært indløb	Rotor case for rectangular inlet	LAR17022006EL	LAR17022006EL	LAR17022013EL	LAR17022013EL
9b	1	304S.S	Rotorhus for køle-/varmekappe	Rotor case for thermal jacket	LA17142006EL	LA17142006EL	LA17142013EL	LA17142013EL
32	1	329S.S	Rotorskruer incl. friktionsring	Rotor screw with washer	LA10502006EL	LA10502007EL	LA10502013EL	LA10502013EL
35	1	316L	Rotor-høj virkningsgrad 110°	Rotor-high efficiency 110°	LA142006P2SHEL	LA14200721SHEL	LA14201321SHEL	LA1420131523SHEL
-	1	316L	Rotor-Multi-Duty 110°	Rotor-Multi-Duty 110°	LA142006P3SHEL	LA14200723SHEL	LA14201323SHEL	LA14201323SHEL
-	1	316L	Rotor-høj temperatur 180°	Rotor-high temperature 180°	LA14200721SYEL	LA14200721SYEL	LA14201321SYEL	LA14201321SYEL
					DW3/014/10	DW3/017/20	DW3/030/10	DW3/030/15_600
					Del nr. / Part No.			
1	1	316L	Frontdæksel standard	Front cover standard	LA1110301EL	LA1110300EL	LA1110300EL	LA1110300EL
1b	1	316L	Frontdæksel køle-/varmekappe	Front cover thermal jacket	LA1101310EL	LA1101311EL	LA1101311EL	LA1101311EL
1	1	316L	Frontdæksel overtryksventil	Front cover relief Valve	LA1115301EL	LA1115300EL	LA1115300EL	LA1115300EL
-	1	316L	Ventil stempel	Valve piston	LA1106301EL	LA1106300EL	LA1106300E	LA1106300E
9	1	304S.S	Rotorhus for standard	Rotor case for standard	LA17993014EL	LA17993014EL	LA17993030EL	LA17993030EL
9a	1	304S.S	Rotorhus for rektangulært indløb	Rotor case for rectangular inlet	LAR17023014EL	LAR17023014EL	LAR17023030EL	LAR17023030EL
9b	1	304S.S	Rotorhus for køle-/varmekappe	Rotor case for thermal jacket	LA17143014EL	LA17143014EL	LA17143030EL	LA17143030EL
32	1	329S.S	Rotorskruer incl. friktionsring	Rotor screw with washer	LA10503014EL	LA10503016EL	LA10503030EL	LA10503030EL
35	1	316L	Rotor-høj virkningsgrad 110°	Rotor-high efficiency 110°	LA143014P2SHEL	LA14301621SHEL	LA14303021SHEL	LA14305021SHEL
-	1	316L	Rotor-Multi-Duty 110°	Rotor-Multi-Duty 110°	LA143014P3SHEL	LA14301623SHEL	LA14303023SHEL	LA14305023SHEL
-	1	316L	Rotor-høj temperatur 180°	Rotor-high temperature 180°	LA143014P1SYEL	LA14301621SYEL	LA14303021SYEL	LA14305021SYEL

8.5.1 Pumpe komplet - El poleret / Pump complete - Electro polished DW



8.5.1 Pumpe komplet - El poleret / Pump complete - Electro polished DW4-5

Pos	Stk/Qty	Material	Benævnelse	Description	Del nr. / Part No.					Lobe	
					Piston	Lobe	Lobe	Lobe	Lobe		
1	1	316L	Frontdæksel standard	Front cover standard	LA1110401EL	LA1110400EL	LA1110400EL	LA1110400EL	LA1110400EL	LA1110400EL	DW4/1257_600
1b	1	316L	Frontdæksel køle-/varmekappe	Front cover thermal jacket	LA1101410EL	LA1101411EL	LA1101411EL	LA1101411EL	LA1101411EL	LA1101411EL	DW4/125/5
1c	1	316L	Frontdæksel overtryksventil	Front cover relief Valve	LA1115401EL	LA1115400EL	LA1115400EL	LA1115400EL	LA1115400EL	LA1115400EL	
-	1	316L	Ventil stempel	Valve piston	LA1106401EL	LA1106400EL	LA1106400EL	LA1106400EL	LA1106400EL	LA1106400EL	
9	1	304S.S	Rotorhus for standard	Rotor case for standard	LA1799403EL	LA1799403EL	LA1799403EL	LA1799403EL	LA1799403EL	LA1799403EL	
9a	1	304S.S	Rotorhus for rektangulært indløb	Rotor case for rectangular inlet	LAR1702403EL	LAR1702403EL	LAR1702403EL	LAR1702403EL	LAR1702403EL	LAR1702403EL	
9b	1	304S.S	Rotorhus for køle- /varmekappe	Rotor case for thermal jacket	LA1714403EL	LA1714403EL	LA1714403EL	LA1714403EL	LA1714403EL	LA1714403EL	
32	1	329S.S	Rotorskrue incl. friktionsring	Rotor screw with washer	LA1050403EL	LA1050403EL	LA1050403EL	LA1050403EL	LA1050403EL	LA1050403EL	
35	1	316L	Rotor-høj virkningsgrad 110°	Rotor-high efficiency 110°	LA14403P2SHEL	LA1440321SHEL	LA1440321SHEL	LA1440321SHEL	LA1440321SHEL	LA1440321SHEL	
-	1	316L	Rotor-Multi-Duty 110°	Rotor-Multi-Duty 110°	LA14403P3SHEL	LA1440323SHEL	LA1440323SHEL	LA1440323SHEL	LA1440323SHEL	LA1440323SHEL	
-	1	316L	Rotor-høj temperatur 180°	Rotor-high temperature 180°	LA14403P1SYEL	LA1440321SYEL	LA1440321SYEL	LA1440321SYEL	LA1440321SYEL	LA1440321SYEL	
					DW5/080/12.5	DW5/093/25	DW5/142/15	DW5/256/15	DW5/256/15		
Pos	Stk/Qty	Material	Benævnelse	Description	Del nr. / Part No.					Lobe	
					Piston	Lobe	Lobe	Lobe	Lobe		
1	1	316L	Frontdæksel standard	Front cover standard	LA1110501EL	LA1110500EL	LA1110500EL	LA1110500EL	LA1110500EL	LA1110500EL	
1b	1	316L	Frontdæksel køle-/varmekappe	Front cover thermal jacket	LA1101510EL	LA1101511EL	LA1101511EL	LA1101511EL	LA1101511EL	LA1101511EL	
1c	1	316L	Frontdæksel overtryksventil	Front cover relief Valve	LA1115501EL	LA1115500EL	LA1115500EL	LA1115500EL	LA1115500EL	LA1115500EL	
-	1	316L	Ventil stempel	Valve piston	LA1106501EL	LA1106500EL	LA1106500EL	LA1106500EL	LA1106500EL	LA1106500EL	
9	1	304S.S	Rotorhus for standard	Rotor case for standard	LA17995080EL	LA17995080EL	LA17995080EL	LA17995080EL	LA17995080EL	LA17995080EL	
9a	1	304S.S	Rotorhus for rektangulært indløb	Rotor case for rectangular inlet	LAR17025080EL	LAR17025080EL	LAR17025080EL	LAR17025080EL	LAR17025080EL	LAR17025080EL	
9b	1	304S.S	Rotorhus for køle- /varmekappe	Rotor case for thermal jacket	LA17145080EL	LA17145080EL	LA17145080EL	LA17145080EL	LA17145080EL	LA17145080EL	
32	1	329S.S	Rotorskrue incl. friktionsring	Rotor screw with washer	LA10505080EL	LA10505080EL	LA10505080EL	LA10505080EL	LA10505080EL	LA10505080EL	
35	1	316L	Rotor-høj virkningsgrad 110°	Rotor-high efficiency 110°	LA14514221SHEL	LA14514221SHEL	LA14514221SHEL	LA14514221SHEL	LA14514221SHEL	LA14514221SHEL	
-	1	316L	Rotor-Multi-Duty 110°	Rotor-Multi-Duty 110°	LA14509323SHEL	LA14509323SHEL	LA14509323SHEL	LA14509323SHEL	LA14509323SHEL	LA14509323SHEL	
-	1	316L	Rotor-høj temperatur 180°	Rotor-high temperature 180°	LA14509321SYEL	LA14509321SYEL	LA14509321SYEL	LA14509321SYEL	LA14509321SYEL	LA14509321SYEL	



Your local contact:



APV, An SPX Brand,
Platinvej 8
6000 Kolding, Denmark
Phone: +45 70 278 444 Fax: +45 70 278 445

For more information about our worldwide locations, approvals, certifications, and local representatives, please visit www.apv.com.

SPX reserves the right to incorporate our latest design and material changes without notice or obligation. Design features, materials of construction and dimensional data, as described in this bulletin, are provided for your information only and should not be relied upon unless confirmed in writing. Certified drawings are available upon request.