



DELTA SI 2

The spring-loaded full-stroke safety valves DELTA SI 2 are approved for use with fluids and gases. They are used wherever vessels or tanks need to be safeguarded against over-pressure. The hygienic design makes it ideal for applications in the dairy, beverage and brewing, as well as chemical and pharmaceutical industries.

Characteristic

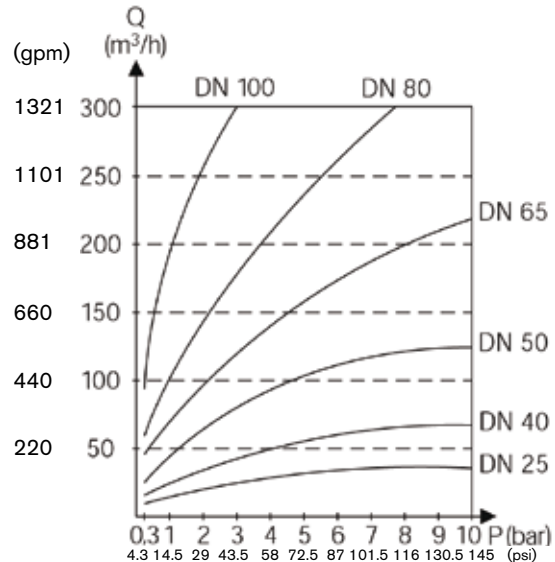
The TÜV-approved safety valves meet the requirements of the pressure tank regulations in AD instruction folder A2 and the VdTÜV instruction folder. The housing is as per AD instruction folder A4 and RB 801 No. 45.

Features and Benefits

- Surface roughness of the product-contact parts $Ra < 32 \mu\text{in}$. ($Ra < 0.8 \mu\text{m}$). Hygienic design. Easy and quick to clean
- Pneumatic seat lifter
- Can also be changed on site
- Provides feature of remote function check
- Seal replacement possible without removing the lead seal, no need to return the valve to the factory
- Name plate stating TÜV type, test approval, number, pick-up pressure etc.
- CIP nozzle is inside the CIP-cleaning adapter
- The valve can be cleaned up to the valve stem
- Easy maintenance
- Seal replacement can be done without removing the lead seal and changing the gasket can be done by only removing the insert

Option

- Manual seat lifter



Medium:

Water ($T = 68^\circ\text{F} / 20^\circ\text{C}$) type test approved in accordance with AD-2000 $\alpha = 0.49$. In case of fluids with densities other than that of water, the flow changes to be derived by the factor:

$$f = \sqrt{\frac{\rho(\text{water})}{\rho(\text{actual medium})}}$$

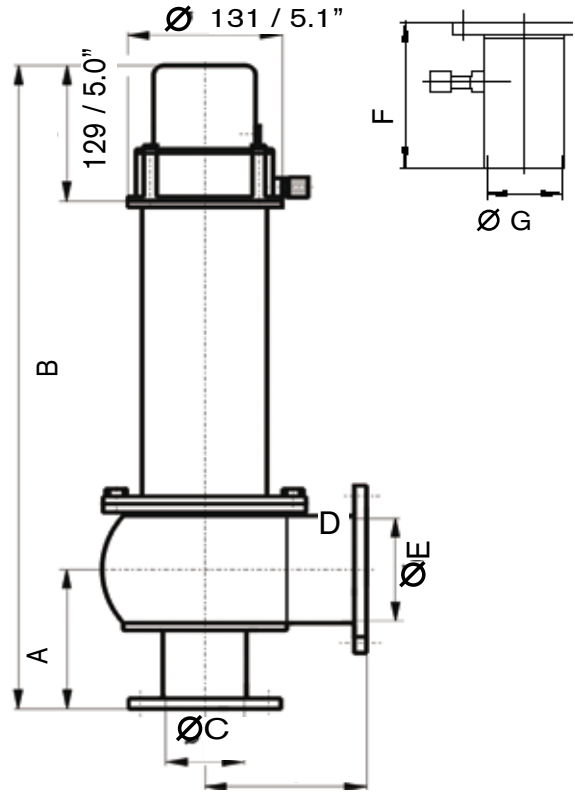


Technical Data

Sizes	DN25 - 100
Product line pressure	145 psi (10 bar)
Product wetted parts	AISI 316L (1.4404)
Max. temperature	EPDM / HNBR 275° / 135°C (short time 284°F / 140°C) VMQ 275°F / 135°C not to be used for hot water FPM 275°F / 135°C not to be used for steam
Control air pressure For seat lift cylinder	Min 87 psi (6 bar), Max 145 psi (10 bar)
Connecting flanges and valve housing	with 3.1.B certificate

Dimensions shown = in. / mm										
DN	A		B		Ø C		D		Ø E	
	in.	mm	in.	mm	in.	mm	in.	mm	in.	mm
25	3.8	96	18.4	468	1.0	26	3.8	96	1.9	50
40	4.3	109	20.9	531	1.5	38	4.3	109	2.6	66
50	4.8	122	21.6	550	1.9	50	4.8	122	3.2	81
65	5.3	135	24.5	622	2.6	66	5.3	135	3.9	100
80	6.1	154	27.4	697	3.2	81	6.2	157	4.9	125
100	6.8	174	28.7	729	3.9	100	6.9	177	5.9	150

CIP - Cleaning Adapter S12				
DN	F		Ø G	
	in.	mm	in.	mm
25	5.5	140	1.5	38
40	3.9	99	1.5	38
50	3.9	99	1.9	50
65	3.9	99	2.6	66
80	3.9	99	3.2	81
100	3.9	99	3.9	100



SPX
WHERE IDEAS MEET INDUSTRY

Your local contact:



APV, An SPX Brand
Phone: (888) 278-4321
Email: answers.us@apv.com

For more information about our worldwide locations, approvals, certifications, and local representatives, please visit www.apv.com.

SPX Corporation reserves the right to incorporate our latest design and material changes without notice or obligation.

Design features, materials of construction and dimensional data, as described in this bulletin, are provided for your information only and should not be relied upon unless confirmed in writing.